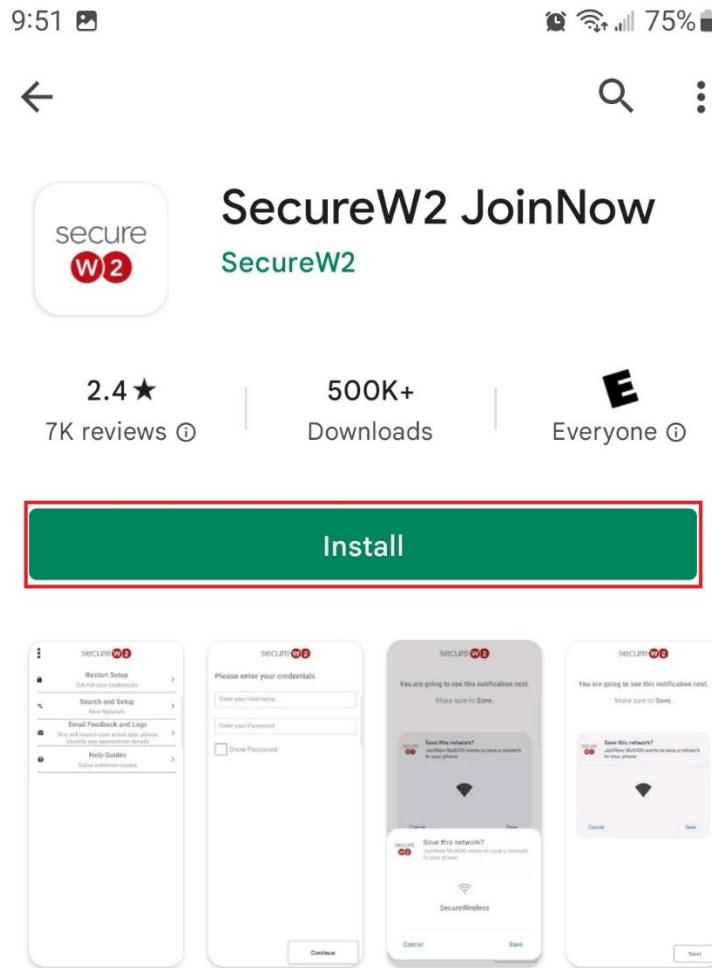
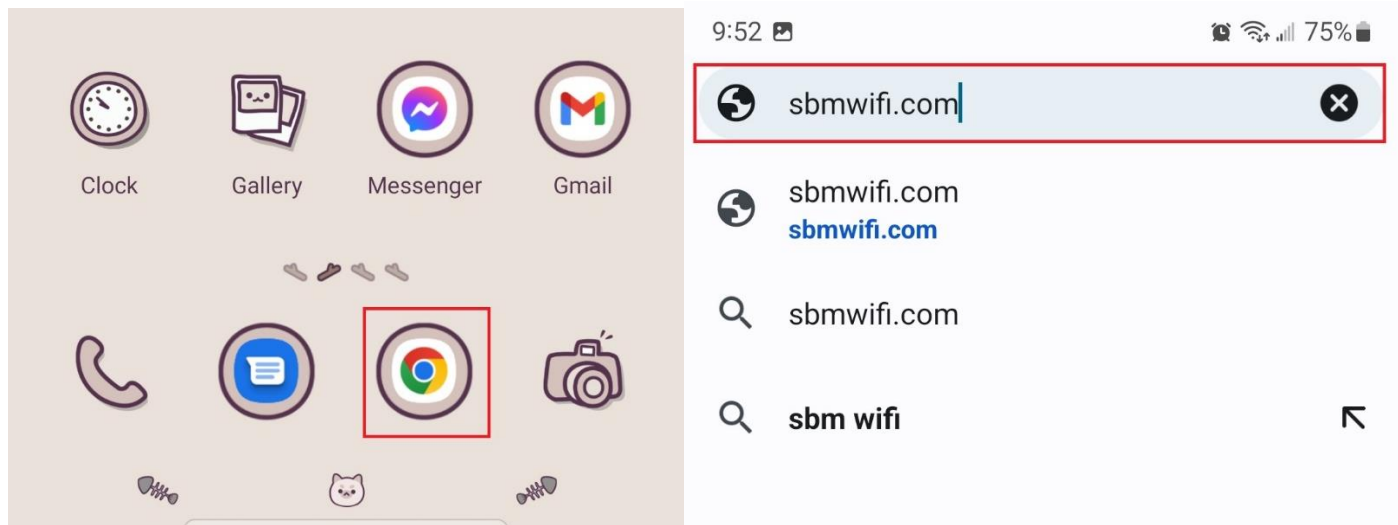


SecureW2 for Android

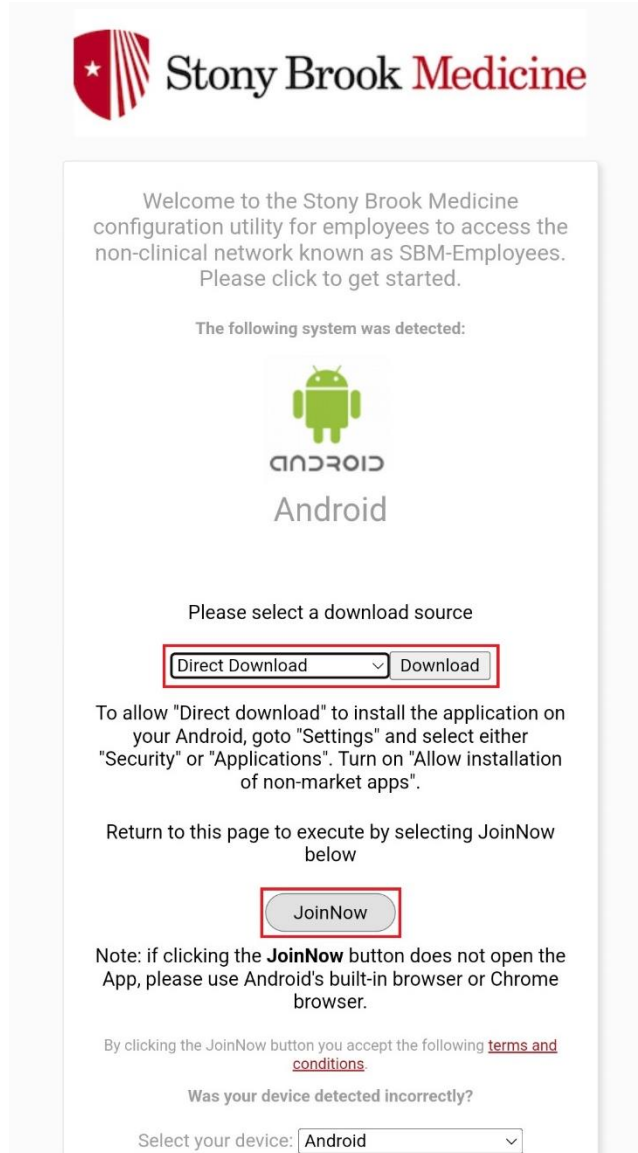
1. Please locate your **Google Play Store** App to download **SecureW2 JoinNow** configurator app. Please search “SecureW2” and then click **Install**.




2. Once SecureW2 Join Now is installed. Please open your Android’s **Web Browser** and enter into the address bar “**sbmwifi.com**”.




- You will be redirected to the SecureW2 portal and your device should be automatically detected. Make sure to select **Direct Download** from the drop-down list, then click **JoinNow**.



 **Stony Brook Medicine**

Welcome to the Stony Brook Medicine configuration utility for employees to access the non-clinical network known as SBM-Employees. Please click to get started.

The following system was detected:


ANDROID
Android

Please select a download source

To allow "Direct download" to install the application on your Android, goto "Settings" and select either "Security" or "Applications". Turn on "Allow installation of non-market apps".

Return to this page to execute by selecting JoinNow below

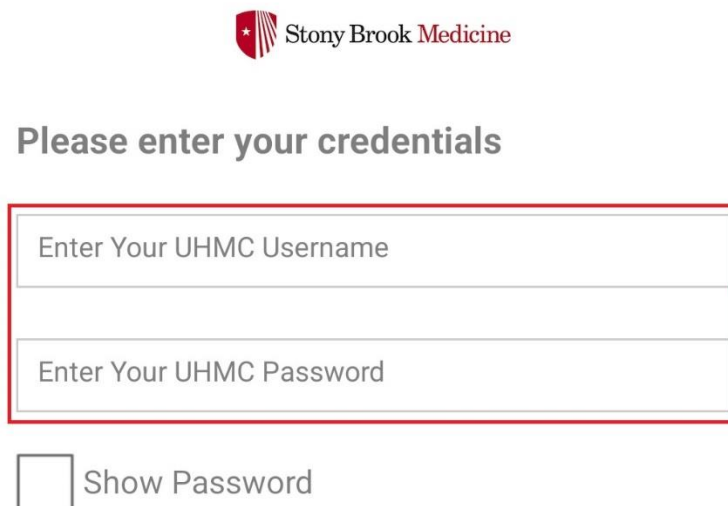
Note: if clicking the **JoinNow** button does not open the App, please use Android's built-in browser or Chrome browser.


By clicking the JoinNow button you accept the following [terms and conditions](#).

Was your device detected incorrectly?

Select your device:

- Enter your **UHMC username and password** then click **Continue** located on the bottom right.

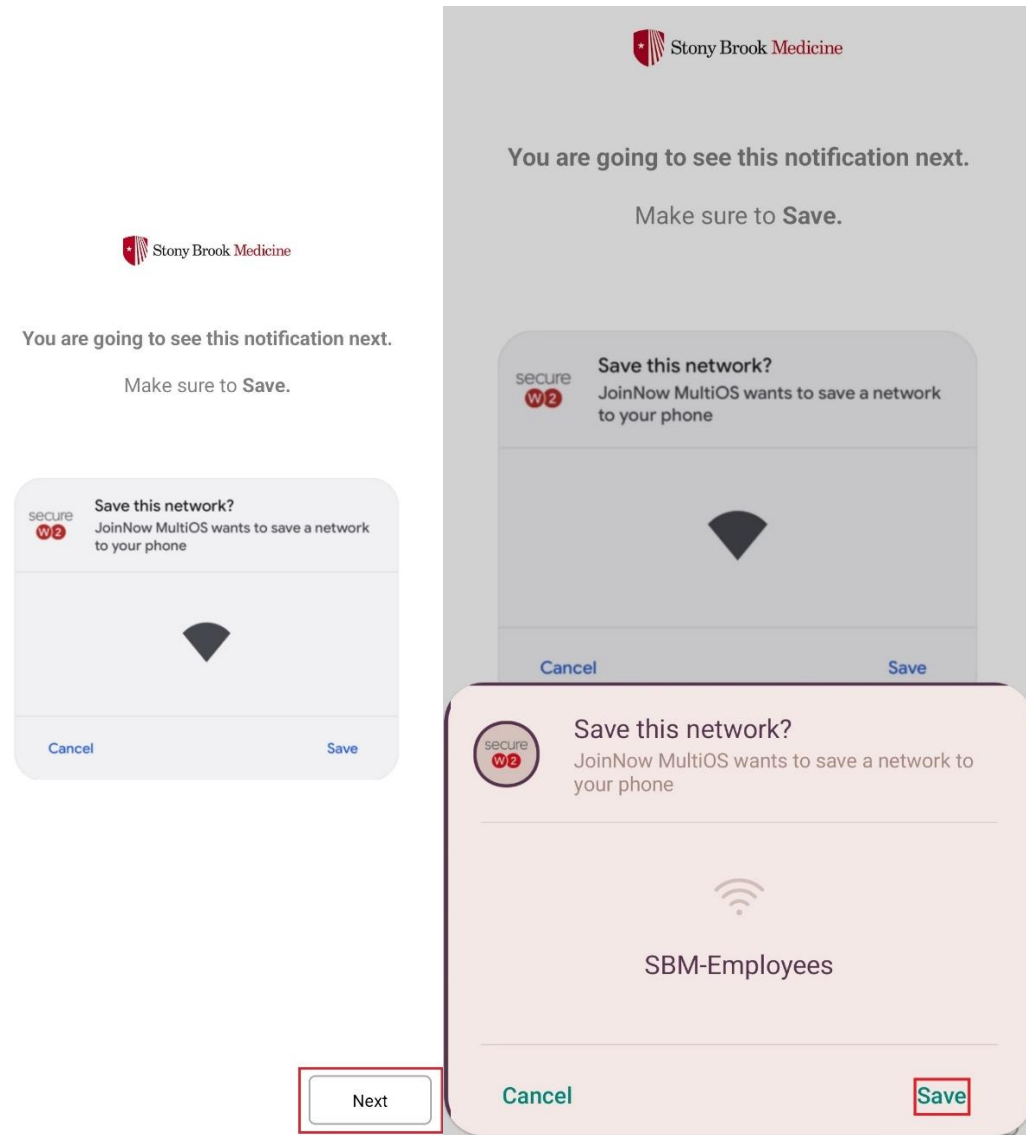


 **Stony Brook Medicine**

Please enter your credentials

Show Password

5. Once successfully authenticated, Click **Next** and then Click **Save**.

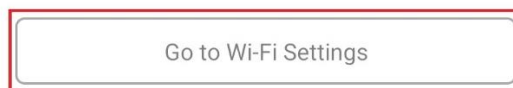


6. Your Android should now be Configured for SBM-Employees. Please go to your **Wi-Fi Settings** and connect to **SBM-Employees**.



Your Device is now Configured for
SBM-Employees!

To check your Connection:



7. Please read the text displayed in the next screen. Do **NOT** delete the **SecureW2 Join** now app. However, you may delete/forget the guest wireless network **SBMED-Guest** if you connected to it in order to get here.



1. Remove the SBMED-Guest network(s)

You have connected to your organization's Secure SSID. You can now forget the open SSID SBMED-Guest by following these steps.

1. Please click [here](#) to go to WifiManager.
2. Long press on the SSID name.
3. Click forget.

2. Don't delete this app

If you delete this small 15MB application, your wireless connection may be lost. Only delete the app if you don't need to connect to the campus network anymore. Google is due to address this in a future update.

3. Enable location permissions

In order for an application to auto-connect a device to a network, Google requires the app to have Location Permissions (on Android 10 & higher while app is in use). If you choose not to allow Location Permissions, you will need to go into your Wi-Fi settings and select your Wi-Fi network manually.